



Indigenous Livelihoods Enhancement Partners (ILEPA)

P.O BOX 1088 -20500 ILEPA Offices, Narok, Kenya

Tel: +254 717 990 996 | Email: info@ilepa-kenya.org | Website: www.ilepa-kenya.org

August 22nd 2025.

TENDER DOCUMENT FOR THE DEVELOPMENT OF THE NCHAISHI SPRING WATER SUPPLY PROJECT.

MAJI MOTO, NAROK COUNTY

ILEPA/IM/02/2024-2025

EMAIL: info@ilepa-kenya.org

WEBSITE: <https://ilepa-kenya.org/index>

CLOSING DATE: 6th September 2025 on or before 5.00 pm

The Procurement Officer,
Indigenous Livelihoods Enhancement Partners (ILEPA)
P.O Box 1088-20500,
Narok, Kenya.

Email: procurement@ilepa-kenya.org
Website: <https://ilepa-kenya.org/index>

Indigenous Livelihoods Enhancement Partners (ILEPA) is a non-for-profit community-based non-governmental organization for human rights, community health and development invites tenders from registered, approved, and reputable contractors for the above works for the Integrated Management of Natural Resources for Resilience in Arid and Semi-Arid Lands (Maji Moto) program that seeks to enhance integrated water resources management hence revitalize and preserve rangeland assets for the benefit of the current and future generations through diversified livelihoods and improved natural resource management and use in Kenya's Arid and Semi-Arid Lands (ASALs). The project pursues to achieve this objective through the solar pump installation and reticulation works for nchaishi spring Development of Nchaishi spring water supply project in Nchaishi Majimoto, Narok County.

Accessibility: The proposed project is Located in Nchaishi ,Majimoto Location in Narok County.

Location: <http://maps.google.com/maps?q=-1.3590921876601578,35.77999547542922>

Completed Tender documents with full tender description to reach Indigenous Livelihoods Enhancement Partners (ILEPA) through email provided below by **6th August 2025** on or before 5.PM and should be addressed to:

The Procurement Officer

Indigenous Livelihoods, Enhancement Partners (ILEPA)

P O Box 1088-20500

Narok.

Hard Copies will be considered.

Indigenous Livelihoods Enhancement Partners (ILEPA) reserves the right to accept or reject any Bid and is not bound to give reasons for its decision.

SECTION I - INSTRUCTIONS TO CANDIDATES

TENDER NO: ILEPA/IM/02/2024-2025

Request for Quotation (RFQ) NAME: DEVELOPMENT OF NCHAISHI SPRING WATER SUPPLY PROJECT.

1. Scope of Pre-qualification

INDIGENOUS LIVELIHOODS ENHANCEMENT PARTNERS (ILEPA) hereinafter referred to as the procuring entity invites tenders to develop the Nchaishi Spring Water Supply Project in Nchaishi, MajiMoto Narok County.

1.2 Submission of Application

1.2.1 Applications for the RFQ shall be submitted by email to procurement@ilepa-kenya.org addressed to The Procurement Officer, Indigenous Livelihoods Enhancement Partners (ILEPA) to be received on 6th September 2025 on or before 5.PM.

1.2.2 Indigenous Livelihoods Enhancement Partners (ILEPA) reserves the right to accept or reject late applications.

1.2.3 The **name of the Company** and the **Tender Number** SHOULD be **marked** as the **RE: Subject on Mail**

1.2.4 All the information requested shall be provided in the English language.

1.2.5 The unit rates and prices **MUST** be in **Kenya Shillings**

1.2.6 Failure to provide information that is essential for effective evaluation of the applicant's qualifications or to provide timely clarification or substantiation of the information supplied may result in the applicant's disqualification.

1.3 Eligible Candidates

1.3.1 Indigenous Livelihoods Enhancement Partners (ILEPA) invites all candidates who are eligible as defined in Kenya's Public Procurement Law and regulations and as indicated in the appendix to instructions to candidates.

1.3.2 The procuring entity's employees, committee members, board members, and their relatives (spouse and children) are not eligible to participate in the tender unless where specially allowed under section 131 of the Act.

1.3.3 All firms found capable of performing the contract satisfactorily per the set pre-qualification criteria shall be considered.

1.4 Qualification Criteria

To qualify for award of the Contract, tenderers shall meet the following minimum qualifying criteria and must attach valid documentation of the following minimum requirements:

- a) Must be a registered Business in Kenya (**Attach** Certificate of Registration)
- b) Attach a Valid Business Permit.

- c) The Contractor must possess registration in **specialist category of Water Works atleast NCA 7**, or higher registration with National Construction Authority (NCA).
- d) Attach valid **Tax Compliance Certificates**.
- e) **CR12** or registration document detailing firms' directors.
- f) Attach details of similar or relevant works completed within the last five years giving details of clients who may be contacted for more information, amount and status (completed or ongoing). **Completion certificates** are the preferred evidence required to prove certification of satisfactory completion of awarded works.
- g) A detailed Workplan of works showing contractor's proposed schedule of undertaking the construction. The expected delivery/construction period in **Weeks**.
- h) Your prices **MUST** include all applicable government taxes.
- i) Indigenous Livelihoods Enhancement Partners (ILEPA) payment terms for all works upon issuance of invoice and fully signed completion certificate for the milestone invoiced.
- j) Bidders must sign and stamp the tenders.
- k) All Contractors to fill the **attached list for personnel, plant and equipment as per NCA Guidelines**. Any submitted document that lacks the filled list will not be considered.

1.4.1 The tenderer shall bear all costs associated with the preparation and submission of his tender, and Indigenous Livelihoods Enhancement Partners (ILEPA) will in no case be responsible or liable for those costs.

1.4.2 The tenderer, at the tenderer's own responsibility and risk, is encouraged to visit and be familiar with the road network and delivery location and its surroundings and obtain all information that may be necessary for preparing the tender and entering into a contract. The costs of visiting the site shall be at the tenderers own expense.

1.5 Tender Documents

1.5.1 The complete set of tender documents comprises the documents listed below, and any addenda issued in accordance with Section IV.

- 1.1.1 These Instructions to Tenderers
- 1.1.2 Form of Tender and Qualification Information
- 1.1.3 Specifications
- 1.1.4 Drawings
- 1.1.5 Bills of Quantities

1.5.2 The tenderer shall examine all Instructions, Forms to be filled and Specifications in the tender documents. Failure to furnish all information required by the tender documents, or submission of a tender not substantially responsive to the tendering documents in every respect will be at the tenderers risk and may result in rejection of his tender

1.5.3 A prospective tenderer making an inquiry relating to the tender documents may notify Indigenous Livelihoods Enhancement Partners (ILEPA) in writing at the address indicated in the letter of invitation to tender. Indigenous Livelihoods Enhancement Partners (ILEPA) will only respond to requests for clarification received earlier than three (3) working days (Monday to Friday) prior to the deadline for submission of tenders. Copies of the Indigenous Livelihoods Enhancement Partners (ILEPA) response will be forwarded to all persons issued with tendering documents, including a description of the inquiry, but without identifying its source.

1.5.4 Before the deadline for submission of tenders, Indigenous Livelihoods Enhancement Partners (ILEPA) may modify the tendering documents by issuing addenda. Any addendum thus issued shall be part of the tendering documents and shall be communicated in writing or by cable, telex or facsimile to all tenderers.

To give prospective tenderers reasonable time in which to take an addendum into account in preparing their tenders, Indigenous Livelihoods Enhancement Partners (ILEPA) may extend, as necessary, the deadline for submission of tenders.

1.6 Preparation of Tenders

1.6.1 The tender submitted by the tenderer shall comprise the following:

- (a) These Instructions to Tenderers
- (b) Form of Tender and Specifications
- (c) Priced List Bills of Quantities
- (d) Qualification Information Form and Documents
- (e) Any other materials required to be completed and submitted by the tenderers

1.6.2 The tenderer shall fill in rates and prices for all items of the materials described in the Bill of Quantities. Items for which no rate or price is entered by the tenderer will not be paid for when executed and shall be deemed covered by the other rates and prices in the Bill of Quantities. All duties, taxes, and other levies payable by the Contractor under the Contract, or for any other cause relevant to the Contract, as of 30 days prior to the deadline for submission of tenders, shall be included in the tender price submitted by the tenderer.

1.6.3 Tenders shall remain valid for a period of one hundred and twenty (120) days from the date of tender closing. However, in exceptional circumstances, the Indigenous Livelihoods Enhancement Partners (ILEPA) may request that the tenderers extend the period of validity for a specified additional period. The request and the tenderers' responses shall be made in writing. A tenderer agreeing to the request will not be required or permitted to otherwise modify the tender.

1.6.4 Tenderers shall submit offers that comply with the requirements of the tendering documents. Alternatives will not be considered, unless specifically allowed in the invitation to tender.

1.6.5 The tender shall be typed or written in indelible ink and shall be signed by a person or persons duly authorized to sign on behalf of the tenderer. All pages of the tender shall be numbered and where alterations or additions have been made shall be initialized by the person or persons signing the tender.

1.6.6 Clarification of tenders shall be requested by the tenderer to be received by the procuring entity not later than 3 working days (Monday to Friday) prior to the deadline for submission of tenders.

1.6.7 Indigenous Livelihoods Enhancement Partners (ILEPA) shall reply to any clarifications sought by the tenderer within 3 working days of receiving the request to enable the tenderer to make timely submission of its tender.

1.7 Submission of Tenders

1.7.1 The tenderers shall submit only one document through the email address provided.

1.7.2 Any tender received after the deadline prescribed in the invitation to tender will be rejected.

1.7.3 Tenderers may modify or withdraw their tenders during the tendering period. No tender may be modified after the deadline for submission of tenders.

1.7.4 Tenderers may only offer discounts to, or otherwise modify the prices of their tenders by submitting tender modifications or be included in the tender submission.

1.7.5 Completed Tender documents should be sent via the email address provided to be received on the 6th September 2025 on or before 5:00 pm.

1.7.6 Tender prices must remain valid for 120 days from the date of tender closing.

1.8 Tender Opening and Evaluation

1.8.1 Tenders will be opened by Indigenous Livelihoods Enhancement Partners (ILEPA).

1.8.2 Information relating to the examination, clarification, evaluation, and comparison of tenders and recommendations for the award of Contract shall not be disclosed to tenderers or any other persons not officially concerned with such process until the award to the successful tenderer has been announced. Any effort by a tenderer to influence Indigenous Livelihoods Enhancement Partners (ILEPA)'s officials, processing of tenders or award decisions may result in the rejection of his tender.

1.8.3 To assist in the examination, evaluation, and comparison of tenders, Indigenous Livelihoods Enhancement Partners (ILEPA) at her discretion, may ask any tenderer for clarification of the tender, including breakdowns of unit rates. The request for clarification and the response shall be in writing or email but no change in the price or substance of the tender shall be sought, offered, or permitted except as required to confirm the correction of arithmetic errors discovered in the evaluation of the tenders.

1.8.4 Prior to the detailed evaluation of tenders, Indigenous Livelihoods Enhancement Partners (ILEPA) will determine whether each tender.

- meets the eligibility criteria defined in the invitation to tender.
- has been properly signed.
- is accompanied by the required documents; and
- is substantially responsive to the requirements of the tendering documents.

1.8.5 A substantially responsive tender is one which conforms to all the terms, conditions and specifications of the tendering documents, without material deviation or reservation. A material deviation or reservation is one.

- Which affects in any substantial way the scope, quality, or performance of the works.
- Which limits in any substantial way, inconsistent with the tendering documents, Indigenous Livelihoods Enhancement Partners (ILEPA)'s rights or the tenderers obligations under the Contract; or
- Whose rectification would affect unfairly the competitive position of other tenderers presenting substantially responsive tenders.

1.8.6 If a tender is not substantially responsive, it will be rejected, and may not subsequently be made responsive by correction or withdrawal of the nonconforming deviation or reservation.

1.8.7 Tenders determined to be substantially responsive will be checked for any arithmetic errors. Errors will be corrected as follows:

- Where there is a discrepancy between the amount in figures and the amount in words, the **amount in words** will **prevail**; and
- Where there is a discrepancy between the unit rate and the line-item total resulting from multiplying the unit rate by the quantity, the **unit rate** as quoted will **prevail**, unless in the opinion of Indigenous Livelihoods Enhancement Partners (ILEPA), there is an obvious typographical error, in which case the adjustment will be made to the entry containing that error.
- In the event of a discrepancy between the tender amount as stated in the Form of Tender and the corrected tender figure in the main summary of the Bill of Quantities, the **amount as stated** in the **Form of Tender** shall **prevail**.

1.8.8 Indigenous Livelihoods Enhancement Partners (ILEPA) will evaluate and compare only the tenders determined to be substantially responsive. Indigenous Livelihoods Enhancement Partners (ILEPA) shall use the criteria and methodologies listed in the Section “EVALUATION AND QUALIFICATION CRITERIA”

1.8.9 In evaluating the tenders, Indigenous Livelihoods Enhancement Partners (ILEPA) will determine for each tender the evaluated tender price by adjusting the tender price as follows:

- making any correction for errors
- making appropriate adjustments to reflect discounts or other price modifications offered

1.8.10 Indigenous Livelihoods Enhancement Partners (ILEPA) reserves the right to accept or reject any variation, deviation, or alternative offer. Variations, deviations, and alternative offers and other factors which are in excess of the requirements of the tender documents or otherwise result in unsolicited benefits for Indigenous Livelihoods Enhancement Partners (ILEPA) will not be considered in tender evaluation.

1.8.11 The tenderer shall not influence Indigenous Livelihoods Enhancement Partners (ILEPA) on any matter relating to his tender from the time of the tender opening to the time the Contract is awarded. Any effort by the Tenderer to influence the Indigenous Livelihoods Enhancement Partners (ILEPA) or his employees in his decision on tender evaluation, tender comparison or Contract award may result in the rejection of the tender.

1.9 Award of Contract

1.9.1 The award of the Contract will be made to the tenderer whose tender has been determined to be substantially responsive to the tendering documents and who has offered the lowest evaluated tender price.

1.9.2 Indigenous Livelihoods Enhancement Partners (ILEPA) reserves the right to accept or reject any tender, and to cancel the tendering process and reject all tenders, at any time prior to the award of Contract, without thereby incurring any liability to the affected tenderer or tenderers or any obligation to inform the affected tenderer or tenderers of the grounds for the action.

1.9.3 The tenderer whose tender has been accepted will be notified of the award prior to expiration of the tender validity period in writing or by email. This notification (hereinafter and in all Contract, documents called the “Letter of Acceptance”) will state the sum (hereinafter and in

all Contract, documents called the “Contract Price”) that Indigenous Livelihoods Enhancement Partners (ILEPA) will pay the Contractor in consideration of the execution, completion, and maintenance of the Works by the Contractor as prescribed by the Contract.

1.9.4 The contract shall be formed on the parties signing the contract.

1.9.5 The Agreement will incorporate all agreements between Indigenous Livelihoods Enhancement Partners (ILEPA) and the successful tenderer.

1.9.6 Indigenous Livelihoods Enhancement Partners (ILEPA) may at any time terminate procurement proceedings before contract award and shall not be liable to any person for the termination.

1.9.7 A tenderer who gives false information in the tender document about its qualification shall not be considered for re-engagement in future Indigenous Livelihoods Enhancement Partners (ILEPA) procurement.

1.10 Conflict of Interest

1.10.1 The applicant shall not be associated, nor have been associated in the past, with Indigenous Livelihoods Enhancement Partners (ILEPA) or any other entity that has prepared these documents. Any such association must be disclosed and may result in the disqualification of the applicant.

1.11 Corrupt or Fraudulent Practices

1.11.1 Indigenous Livelihoods Enhancement Partners (ILEPA) requires that bidders observe the highest standard of ethics during the procurement process and execution of contracts when used in the present regulations, the following terms are defined as follows.

(i) “corrupt practice” means the offering, giving, receiving, or soliciting of anything of value to influence the action of a public official in the procurement process or contract execution; and

(ii) “fraudulent practice” means a misrepresentation of facts to influence a procurement process or the execution of a contract to the detriment of the Procuring entity, and includes collusive practice among tenderers (prior to or after tender submission) designed to establish tender prices at artificial non-competitive levels and to deprive the Procuring entity of the benefits of free and open competition.

1.11.2 Indigenous Livelihoods Enhancement Partners (ILEPA) will reject a proposal for award if it determines that the tenderer recommended for award has engaged in corrupt or fraudulent practices in competing for the contract in question.

1.11.3 Further a tenderer who is found to have indulged in corrupt or fraudulent practices risks being debarred from participating in the engagement of future Indigenous Livelihoods Enhancement Partners (ILEPA) procurement.

APPENDIX TO INSTRUCTIONS TO BIDDERS

Notes on the Appendix to the Instruction to Bidders

1. The Appendix to instructions to candidates is intended to assist Indigenous Livelihoods Enhancement Partners (ILEPA) in providing specific information in relation to the corresponding clause in the instructions to the candidates included in Section II and has to be prepared for each specific procurement.
2. Indigenous Livelihoods Enhancement Partners (ILEPA) should specify in the appendix information and requirements specific to the circumstances of the procuring entity, the goods to be procured, and any criteria/s that will apply for pre-qualification.
3. In preparing the Appendix the following aspects should be taken into consideration.
 - (a) The information that specifies and complements provisions of Section II to be incorporated
 - (b) Amendments and/or supplements if any, to provisions of Section II as necessitated by the circumstances of the goods to be procured to be also incorporated
4. Section II should remain unchanged and can only be amended through the Appendix.
5. Clauses to be included in this part must be consistent with the public procurement law and the regulations.

APPENDIX TO INSTRUCTIONS TO BIDDERS

The following information regarding the particulars of the documents shall complement, supplement or amend the provisions of the instructions to the bidders. Wherever there is a conflict between the provision of the instructions to the bidders and the provisions of the appendix, the provisions of the appendix herein shall prevail over those of the instructions to the bidders.

INSTRUCTIONS TO BIDDERS REFERENCE	PARTICULARS OF THE APPENDIX TO INSTRUCTIONS TO BIDDERS
2.1	DEVELOPMENT OF NCHAISHI SPRING WATER SUPPLY PROJECT .ILEPA/IM/02/2024-2025
2.1.1	The closing date will be 6 th September 2025 on or before 5.00 pm.

SECTION II

LETTER OF APPLICATION

Date

To Chief Executive Officer,
Indigenous Livelihoods Enhancement Partners (ILEPA)
P.O BOX 1088-20500
NAROK

Ladies and/or Gentlemen

1. Being duly authorized to represent and act on behalf _____ (name of firm) (hereinafter referred to as “the Applicant”), and having reviewed and fully understood all of the pre-qualification information provided, the undersigned hereby apply to be prequalified by yourselves as a bidder for the following contract(s) under (R.F.Q Name)

RFQ Number	RFQ Name
1.	
2.	
3.	

2. Attached to this letter are copies of original documents defining (a) (b) (c)
 - a. the Applicant’s legal status
 - b. the principal place of business and
 - c. the place of incorporation (for applicants who are corporations), or the place of registration and the nationality of the owners (for applicants who are partnerships or individually owned firms).
3. Your Agency and its authorized representatives are hereby authorized to conduct any inquiries or investigations to verify the statements, documents, and information submitted in connection with this application, and to seek clarification from our bankers and clients regarding any financial and technical aspects. This letter of Application will also serve as authorization to any individual or authorized representative of any institution referred to in the supporting information, to provide such information deemed necessary and as requested by you to verify statements and information provided in this application, such as the resources, experience, and competence of the Applicant.
4. Your Agency and its authorized representatives may contact the following persons for further information.

General and managerial inquiries	
Contact 1	Telephone 1
Contact 2	Telephone 2

Personnel inquiries	
Contact 1	Telephone 1
Contact 2	Telephone 2

Technical inquiries	
Contact 1	Telephone 1
Contact 2	Telephone 2
Contact 3	Telephone 3

Financial inquiries	
Contact 1	Telephone 1
Contact 2	Telephone 2

5. This application is made with the full understanding that:
 - a. Bids by P.Q. applicants will be subject to verification of all information submitted for P.Q. at the time of bidding.
 - b. Your Agency reserves the right to:
 - amend the scope and value of any contracts bid under this project; in such event, bids will only be called from bidders who meet the revised requirements; and
 - reject or accept any application, cancel the pre-qualification process, and reject all applications
 - c. your Agency shall not be liable for any such actions and shall be under no obligation to inform the Applicant of the grounds for them
6. We confirm that if we bid, that bid, as well as any resulting contract, will be: (a) signed so as to legally bind all partners, jointly and severally.
7. The undersigned declares that the statement made and the information provided in the duly completed application are complete, true, and correct in every detail.

Signed	Signed
Name	Name

For and on behalf of (name of Applicant)	For and on behalf of (name of Partner)
Signed	Signed
Name	Name
For and on behalf of (name of Partner)	For and on behalf of (name of Partner)

SECTION III – EVALUATION AND QUALIFICATION CRITERIA

This will involve assessing whether bidders have complied with submission requirements and have also attached copies of mandatory eligibility and statutory documents. Evaluation at this stage will be conducted on Yes/No, and bidders are expected to comply with ALL required items so as to proceed to the next stage of evaluation.

No.	Completeness and Responsiveness Criteria	Requirement
1.	Valid Tax Compliance Certificate	- Copy of Valid Tax Compliance Certificate
2.	Registration with National Construction Authority	- Copy of Valid National Construction Authority (NCA) registration Certificate for at least Class 7 and above which must be in Water works Category - accompanied by valid practicing license. This shall be verified in the NCA portal.
3.	Certificate of Incorporation	- Copy of a valid certificate
4.	CR12 Form	- Copy of current CR12 Form
5.	Physical Location	- Copy of Valid Business Permit

Stage 2: Technical Responsiveness Evaluation Stage

Tenders will be evaluated to ensure that they are substantially responsive to the technical specifications and contract conditions stated in the Tender Document. The determination of a tender's technical responsiveness will be based on the contents of the tender itself, subject to any clarifications received in the preliminary examination of Tenders. Items of this evaluation will be scored as below.

ITEM	DESCRIPTION	POINT SCORE SCALE
1	EXPERIENCE	
	1.1 Attach practical completion certificates ONLY for past Six similar successfully delivered projects of equal or higher value done in the last five years @ 5Mrks per each as evidences.	Max 30

2	KEY PERSONNEL	Max 30
---	---------------	--------

ITEM	DESCRIPTION		POINT SCORE SCALE
	Technical skill in terms of human resource. <ul style="list-style-type: none"> - Attach CVs (2 page only) and - certified copies of academic certificates detailing qualifications of the key personnel who shall be involved in this assignment. The persons must be working with the organization or sign an undertaking to work with the firm by the time of submitting this tender throughout the job if awarded. Each of the 3 personnel will be evaluated on the following parameters: 		30
a.	Project Manager/Site Agent/Civil Engineer/Water Engineer (Max 8 marks)	Technical qualification - Degree (3) Experience in years (min 8 years) (3) Registration with the relevant professional body (EBK, IEK, KETREB (2).	8
b.	Foreman/Site Supervisor (Max 7 marks)	Technical qualification _ Diploma (5) Experience in years (Min 5 years) (2)	7
c.	Building technician/Mason (Max 5 marks)	Technical qualification _ Diploma/Certificate (3) Experience in years (Min 3 years) (2)	5

ITEM	DESCRIPTION		POINT SCORE SCALE
d.	Plumber/Pipefitter (Max 5 marks)	Technical qualification _ Diploma/Certificate (2) Experience in years (Min 3 years) (3)	5
3	PLANT AND EQUIPMENT – (Edited as per requirements of the specific job PLANT AND EQUIPMENT		Max 15
	Relevant Equipment	Equipment and plant owned by the company. <ul style="list-style-type: none"> - Evidence of ownership/ framework or an agreement/lease agreement for any related equipment. - Machines (i.e Backhoe/Excavator, Truck , Generators, Splicing Machine, Vibrator,Concrete Mixer and Compactor etc. 	15
4	WORK METHODOLOGY		Max 25
		Program of works(WORKPLAN) logically applicable to this task To be revised to reflect that the best proposal with respect to the duration how long ILEPA anticipates that the job will take gets the most marks	5
		Detailed Methodology_ Logically articulated relevant to the works	15
		Methodology on safety and adherence to GOK safety guidelines during the project period.	5
	TOTAL		MAX 100
	REMARKS		

NB: A bidder who will not meet the entire mandatory requirement will not proceed for Technical Evaluation.

A bidder shall be prequalified upon attaining at least **70% marks**.

Indigenous Livelihoods Enhancement Partners (ILEPA) will award the Contract to the tenderer whose tender is determined to be substantially responsive to the tender documents and who has offered the technically acceptable evaluated tender price.

SECTION IV - STANDARD FORMS

Notes on completion of Standard Forms:

Application Form 1 - General information. This form is to be completed by all applicants. Where the applicant proposes to use subcontractors, the information should be supplied in this format.

Application Form 2 - Tender Questionnaire

Application Form 3 - Confidential Business Questionnaire

Application Form 4 - Experience Form

Application Form 5 -Project Registration Schedules

Application Form 6- Equipment Form

Attachment 1:Design_Drawing 50,000 (5x5x2m on 9m)

Attachment 2: Bill of Quantities Form

(The tenderer to strictly use the provided formats in providing information. The pages may be replicated where more than one is needed).

APPLICATION FORM (1)**GENERAL INFORMATION**

1.	Name of firm	
2.	Head office address	
3.	Telephone	Contact
4.	Fax	Email
5.	Place of Incorporation/ Registration	Year of Incorporation/ Registration

Nationality of Owners		
Name		Nationality
1.		
2.		
3.		
4.		

APPLICATION FORM (2)

TENDER QUESTIONNAIRE

Please fill in block letters.

1. Full names of tenderer

.....

2. Full address of tenderer to which tender correspondence is to be sent (unless an agent has been appointed below)

.....

3. Telephone number (s) of tenderer

.....

4. Email address of tenderer

.....

5. Name of tenderer's representative to be contacted on matters of the tender during the tender period

.....

6. Details of tenderer's nominated agent (if any) to receive tender notices. This is essential if the tenderer does not have his registered address in Kenya (name, address, telephone, telex)

.....

.....

Signature of Tenderer

APPLICATION FORM (3)

CONFIDENTIAL BUSINESS QUESTIONNAIRE

You are requested to give the particulars indicated in Part 1 and either Part 2 (a), 2 (b) or 2 (c) and 2 (d) whichever applies to your type of business.

You are advised that it is a serious offence to give false information on this Form.

Part 1 – General

Business Name

Location of business premises; Country/Town.....

Plot No..... Street/Road

Postal Address..... Tel No.....

Nature of Business.....

Current Trade Licence No..... Expiring date.....

Maximum value of business which you can handle at any time: Kshs.....

Name of your bankers.....

Branch.....

Part 2 (a) – Sole Proprietor

Your name in full..... Age.....

Nationality..... Country of Origin.....

*Citizenship details

Part 2 (b) – Partnership

Give details of partners as follows:

Name in full	Nationality	Citizenship Details	Shares
1.....			
2.....			
3.....			

Part 2(c) – Registered Company:

Private or public.....

State the nominal and issued capital of the Company-

Nominal Kshs.....

Issued Kshs.....

Give details of all directors as follows:

Name in full . Nationality. Citizenship Details*. Shares.

1.....

2.....

3.

4.

Part 2(d) – Interest in the Firm:

Is there any person / persons in Indigenous Livelihoods Enhancement Partners (ILEPA) who has interest in this firm? Yes/No..... (Delete as necessary)

I certify that the information given above is correct.

.....

(Name)

(Title)

(Signature)

(Date)

- Attach proof of citizenship

APPLICATION FORM (4)**EXPERIENCE FORM****Similar Construction and Contract Management Experience**

Contract of Similar Size and Nature				
Contract No:	Contract Identification:			
Award Date:		Completion Date:		
Role in Contract	Main Contractor	Member in JV	Management Contractor	Subcontractor
Total Contract Amount	Ksh			
If partner in a JV or subcontractor, specify participation of total contract amount	Percent of Total	Amount		
Employer's Name Address Telephone/Fax Number E-mail				
Description of the similarity in key activities				
Amount				

Physical size of required works items	
Complexity	
Methods/Technology	
Construction rate for key activities	
Other Characteristics	

APPLICATION FORM (5)**PROJECTS REGISTRATION SCHEDULES**

S/NO	Name	Email	Accreditation Number
	Project Manager/ Site Engineers		
	Site Supervisor (s)		
	Plumber(s)		
	Mason(s)		
	Plant and equipment		
S/#	Description	Model	Reg.

PERSONNEL FORM - 1

Tenderers should provide the names and details of the suitably qualified Contractor's Representatives and Key Personnel to perform the Contract. The data on their experience should be supplied using the Personnel Form 2 below for each candidate.

Contractor's Representative and Key Personnel Schedule(Attach their identification documents).

1	Title of position*
	Name:
2	Title of position*
	Name:
3	Title of position*
	Name:
4	Title of position*
	Name:
5	Title of position*

	Name:
6	Title of position*
	Name:
7	Title of position*
	Name:
8	Title of position*
	Name:

PERSONNEL FORM - 2

Resume of Proposed Personnel

Name of Bidder:

Position:		
Personnel information	Name:	Date of birth:
	Address:	E-mail:
	Professional qualifications:	

	Academic qualifications:	
	Language proficiency:	
Present employment	Name of employer:	
	Address of employer:	
	Telephone:	Contact (manager / personnel officer)
	Fax:	E-mail:
	Job title:	Years with present employer

Summarize professional experience in reverse chronological order. Indicate particular technical and managerial experience relevant to the project

Project	Role	Duration of involvement	Relevant experience
<i>[Name and main project details]</i>	<i>[role and responsibilities on the project]</i>	<i>[time in role]</i>	<i>[describe the experience relevant to this position]</i>

APPLICATION FORM (6)**EQUIPMENT FORM**

The Tenderer shall provide adequate information to demonstrate clearly that it has the capability to meet the requirements for the key equipment listed in Section II, Evaluation and Qualification Criteria. A separate Form shall be prepared for each item of equipment listed, or for alternative equipment proposed by the Tenderer

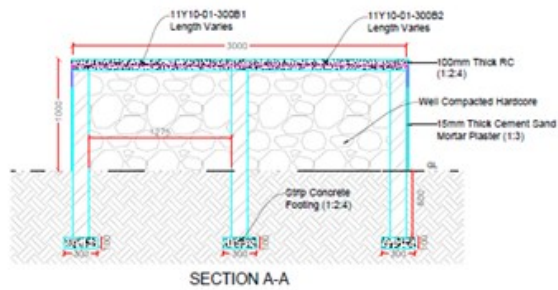
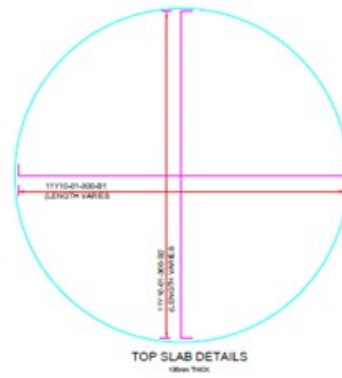
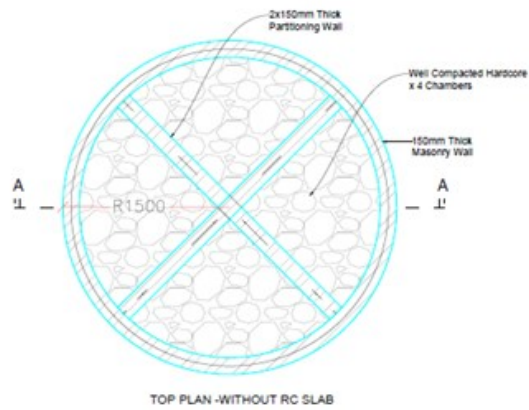
Item of equipment		
Equipment information	Name of manufacturer	Model and power rating
	Capacity	Year of manufacture
Current status	Current location	
	Details of current commitments	
Source	Indicate source of the equipment <div>Owned Rented Leased Specially manufactured</div>	
Omit the following information for equipment owned by the Bidder.		
Owner	Name of owner	

	Address of owner	
	Telephone	Contact name and title
	Fax	Telex
Agreements	Details of rental / lease / manufacture agreements specific to the project	

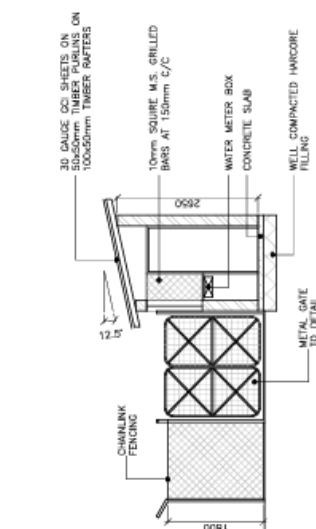
WORK METHODOLOGY

- Site Organization
- Method Statement
- Mobilization Schedule
- Construction Schedule
- Safety, Environmental & Social safeguards
- Others

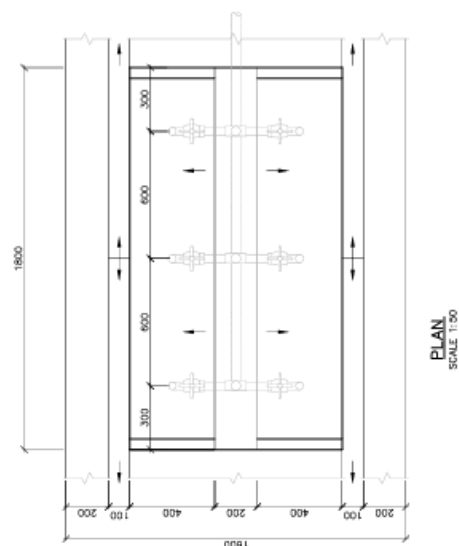
ATTACHMENT 1: DESIGN DRAWING



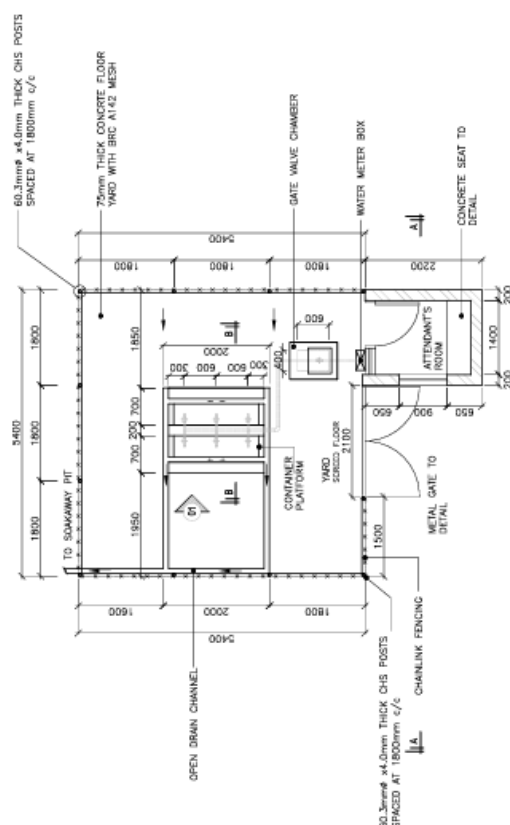
1. ALL DIMENSIONS ARE IN MILLIMETRES UNLESS STATED OTHERWISE.
 2. BLINDING CONCRETE SHALL BE CLASS '10' (1:3:6)
 3. REINFORCED CONCRETE SHALL BE CLASS '25' (1:1.1/2:3)
 4. PLASTERING/Jointing Mortar to be made of Cement/sand in ratio 1:3
 5. Depending on prevailing conditions, the attendants room is optional.
 6. TAPS APPLY TO WATER ROOFS
 7. CONSTRUCTED IN RURAL SETTLEMENTS WHILE
 - 8 TAPS APPLY TO URBAN SETUPS
- Figured dimension, actual dimension to be determined on site

COMMUNAL WATER
POINT DETAILS

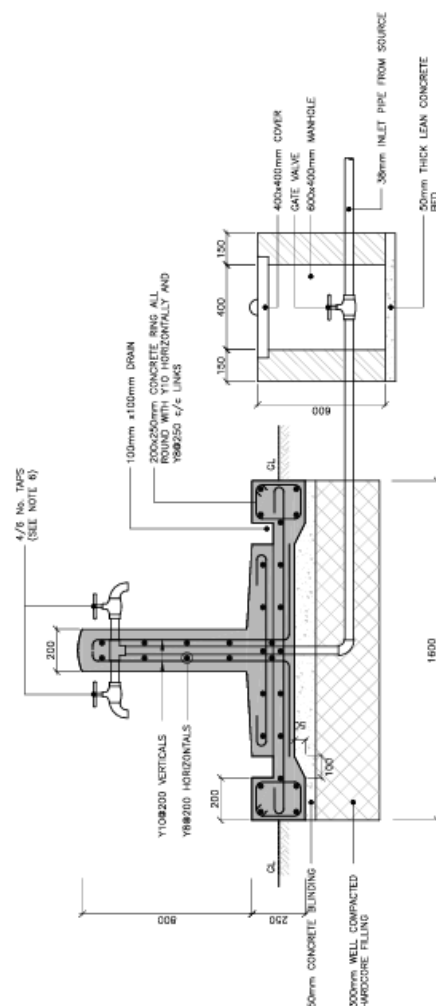
SECTIONAL ELEVATION A-A
SCALE 1:50



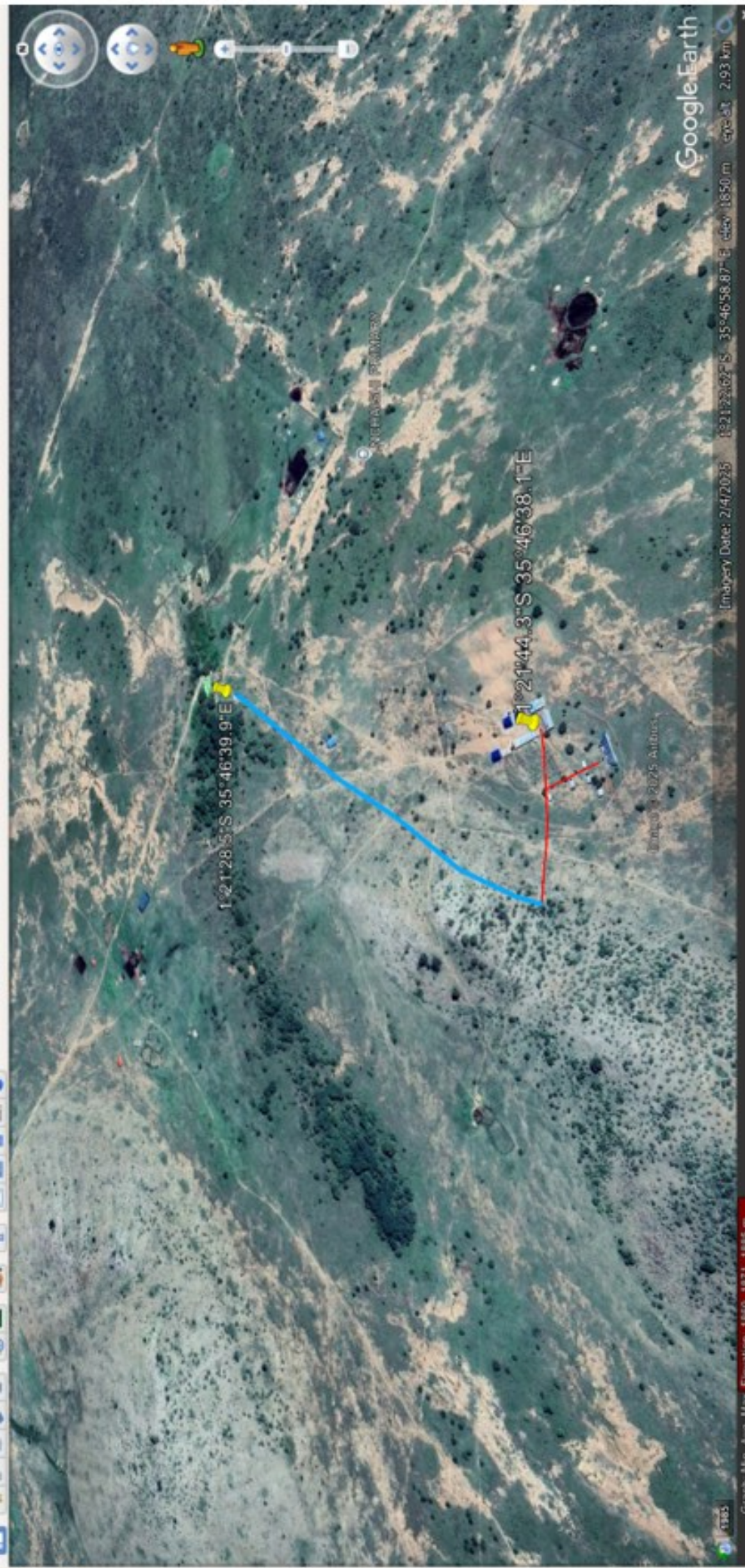
PLAN
SCALE 1:50



PLAN
SCALE 1:100

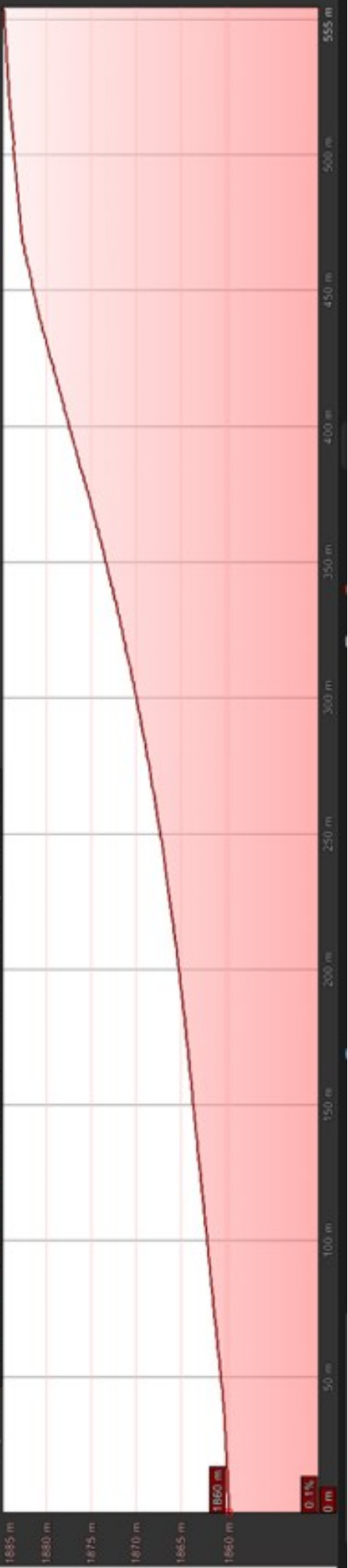


SECTION B-B
SCALE 1:50



Google Earth
[Map Date: 2/4/2025] 1°21'22.62\"/>

Graph: Min, Avg, Max Elevation: 1860, 1871, 1885 m
Range Total: Distance: 555 m Elev Gain/Loss: 25.4 m, -0.22 m Max Slope: 9.7% -0.5% Avg Slope: 4.9% -0.3%



ATTACHMENT 2: BILLS OF QUANTITIES (BOQ)

Indigenous Livelihoods Enhancement Partners (ILEPA)

Nchaishi spring Water Supply Project - BOQ

Water Works - Immediate Intervention Works

	Description	Unit	Qty	Rate (Kes)	Amount (Kes)
	Mobilization & Demobilization				
1	Provide for mobilization of materials and personnel to the Nchaishi spring next to capped borehole site. Cost to include site clearance and other administrative costs.	Sum	1		
2	Spring Flushing and Cleaning:	Sum	1		
	Submersible pump solar equipping.				
	(Provide, install, test and commission)				
3	Provide, install and commission a submersible pump with 0.55kW rated 3-Ph motor (or equivalent as approved) capable of delivering 1.1 m ³ /hr against a head of 45m - to be approved by Supervising Engineer before procurement. The pump should be coupled to the mortar and a DoL starter. <i>Motor should be able to run on a hybrid system.</i>	No	1		
4	Provide, install and test of 3m long 50mm diameter Heavy Duty (27Bar) drop pipes including the well head with necessary fittings and connection to the pump	No	4		
5	Provide for suitable pump control panel, approved 1-1.5 kW inverter 1Ph (or equivalent as approved) c/w all cabling accessories, flow switch, lockable safety enclosure for protection against harsh weather and tampering.	No	1		
6	Provide and install 4 No. 350W crystalline solar module (or equivalent as approved) to add to the existing modules and to power the system (Pump and Motor as in item 2). The design for the number of modules and configuration to be approved by the Engineer. The characteristics of the proposed modules to be same/match that of the existing panels.	Sum	4		

7	Module support structure (min 5m high) for mounting the solar panels to be designed and fabricated by the contractor and approved by the Engineer. Include Buglar proofing to approval.	LS	1		
8	Suitable PV disconnect switch	No.	1		
9	Well Probe Sensors	No.	1		
10	Float Switch	No.	1		
11	Electrical cable of sufficient size to connect the PV modules from roof top to the inverter. Including Airline Pipes PVC. Flat PVC Cables preferred	Sum	1		
12	Splicing Kit set	No.	1		
13	Adaptor Set 2"	No.	1		
14	Junction Box	No.	1		
15	Borehole Cover (heavy duty 6" well head suitable for holding safely the pump equipping in position	No.	1		
16	Installation Sundries	No.	1		
17	Install 2No. Solar Street Lighting Systems (2-50A lamps, dusk to dawn charge controller,125W Solar Module (or equivalent), 150 AH 12V Maintenance Free Li-on Sealed Battery, 5M High Pole.	Item	2		

18	Supply and install 90mm Cold Water Meter, as Sensus, Kent or equivalent, 90mm Non-Return Valve, 90mm Sluice Valve and all other assorted fittings as necessary for testing and commissioning of the system. Rate to include connection of the borehole to the existing water kiosk.	Item	1		
19	Provide for materials and labour for connection of a convenient solar modules cleansing system, connected directly from the borehole. Use perforated or springler system ¾" pipework.	LS	1		
	Pump Chamber & Branding				
	Allow for demolition of current existing spring chamber and carting away the demolished materials as directed on site	Ls	1		
20	Provide all materials and construct a Masonry pump chamber internal dimensions 2000mm x 2000mm x 1200mm high. Include for supply and fixing of lockable c/w lockable heavy duty steel metal cover. Chamber to house the Borehole Well Head, Water Meter, NRV and Sluice Valve. Chamber and cover painted with undercoat of redoxide and two coats of blue color. (Painted all sides as shall be directed by site Engineer)	LS	1		
21	Provision of ENGRAVED and painted branding for the masonry pump chamber with the Donor Logo, ILEPA & other Logos as directed; AND/OR embeded with a non-corrosive Aluminium as discussed, agreed and to satisfactory of the Supervising Engineer.	LS	1		

22	Fencing of spring and Solar PV Installation Site				
	Supply and install plastic coated G12.5 Chain link 50mm mesh size and 4.75 mm wire diameter(2.5 m Height) to BS 1722, with 5 strands Line Wire zinc-coated Grade A 4.75mm to BS 410 fixed on Pre-cast concrete fencing posts (2.7m height) dimensions 150mm x 150 mm at a spacing of 2.5m and install a 3m wide steel single gate comprising 40mm x 40mm x 2mm frame infilled with 40mm meshwire of 4mm diameter; the steel gate shall be supported on a 80mm x 80mm x 2mm black pipe. The gate and supporting pipe shall be treated with two coats zinc sulfate and 1 coat oil-based blue paint. The gate shall be lockable with a heavy ratchet and provided with heavy duty padlock.				
22.1	2.7m height Pre-cast concrete fencing posts as per the specifications above. Price to include excavation of pits and anchoring to ground using plain concrete (Ratio 1:2:3)	No.	54		
22.2	DITTO to straining posts at every 10th post and all corners	No.	13		
22.3	Chain link fence as per the specification above. Price to include binding wire and other wire nails for holding the chainlink firmly to the line wire and concrete to hold the chainlink on the ground.	m	100		
22.4	Lockable gate as per the specification above. Price to include excavation of pits to receive black-pipes firmly to approval and related concrete works to approval	No.	1		
22.5	Line Wire zinc-coated Grade A 4.75mm to BS 410, @400mm strands.	m	600		
22.6	Barbed wire G12.5x x 20kg/roll, @300mm strands for slant top of concrete posts.	Roll	1		
TOTAL					

Bill No. 2: Rising Main to 10m ³ PVC Main Tank					
-	-	-	-	-	-
ITEM No.	ITEM DESCRIPTION	UNIT	Qty	Unit Rate	Total Amount (KES)
	<u>CLASS A: GENERAL ITEM</u>				
A25	<i>Testing of works</i>				
A25.1	Pressure testing and commissioning for the pipeline, including all necessary equipment, materials and labour for the works e.g. delivery of water for testing, fittings, disposal of used water. Pressure gauge to be calibrated by an accredited body	m	840		
A25.2	Disinfection of Pipe lines: flushing with clear water, filling with water containing 0.05 g/l calcium hypochlorite for 24 hours. This includes supply of all necessary equipment, materials, chemicals and water, measurement of residual chlorine, all as specified.	m	840		
	CLASS D: DEMOLITION AND SITE CLEARANCE				
D1	General clearance (1.5m wide corridor)	m	840		
	<i>Stumps (Provisional)</i>				
	Cut down trees, grub up roots and cart away to tips, Girth shall be measured 1.0 m above the ground level				
D32	Girth: 0.5m - 1.0m	Nr	1		
	CLASS I: PIPE WORK - PIPES				
	<i>Provide and Lay</i>				
	Provide (incl purchase, storage and transportation), lay and joint pipes in trench, include for excavation in normal material, preparation of surfaces, disposal of excavated material, dewatering, shoring sides of excavation and backfilling with suitable selected excavated material				

	<p>Note:- Trench width and minimum cover to pipes is as per the Specification (width 600mm and min cover 800mm). The cost shall include for strutting, shuttering, stabilizing the earth faces of trenches and keeping the trenches free of water from whatever source by pumping or other means and cost of use of selected soil from the excavated material for compaction in bed and surround to backfilling of trenches, all as specified.</p> <p><u>The rate shall also include excavation in pipeline trench for rock and hard material</u></p>				
	-				
	Provide and Lay 'Galvanized Iron ' (GI) Class B				
	-				
I712	OD 63mm in trench, depth not exceeding 1.5 m	m	560		
I713	OD 110mm in trench, depth 1.5 - 2 m	m			-
		Iron			
	-				
	-				
	-				
	-				
					-
	-				
Bill No. 2: Rising Main to 10m³ PVC Main Tank					
ITEM No.	ITEM DESCRIPTION	UNIT	Qty	Unit Rate	Total Amount (KES)
	CLASS J: PIPE WORK - FITTINGS AND VALVES				
	Provide, Lay and Joint				
	CLASS J: PIPE WORK - FITTINGS AND VALVES				
	-				
	<i>OD 110mm HDPE PN12.5 Elbows (Compression Fitted)</i>				
J611.1	45°	Nr	1		
J611.2	90°	Nr	3		
	-				
	<u>Tees</u>				

	<i>PN 12.5 Butt fused</i>				
J621	OD 63mm x OD 63mm	Nr			
	<u>Valves</u>				
	-				
	Supply, handle, deliver to site, fix in place and test inclusive of all fittings as in the Standard drawings . Valves to BS 5163 and EN 1074 Standards				
	<u>Air-Valves</u>				
	<i>Anti shock anti surge Air Valve with isolating valve</i>				
J861	DN 50 Single orifice on OD63 mm pipeline	nr	1		
	<u>Washout valves</u>				
	-				
J811.1	Washout Valve (63mm opening) on OD110mm pipe	nr	1		
	<u>Sluice/Gate Valves</u>				
J811.2	DN50 mm	nr	2		
	<u>Non Return Valves</u>				
J831	DN50 mm	nr	1		
	<u>Flexible couplings</u>				
	-				
J641.1	DN50 mm	nr	4		
	<u>Flange adapters</u>				
J651	DN50 mm	nr			
	<u>Galvanised iron pipes Pieces</u>				
	Supply, handle, deliver to site, fix in place and test inclusive of all steel pipes PN16 to be used in valve and meter chambers				
J381	DN90mm - Single Flanged Plain Ended, 1m long	nr	4		
	-				

					-
	-				
Bill No. 2: Rising Main to 10m3 PVC Main Tank					
ITEM No.	ITEM DESCRIPTION	UNIT	Qty	Unit Rate	Total Amount (KES)
	ANCILLARY WORKS				
	-				
	Chambers, ducts, culverts, crossings, thrust and anchor blocks, reinstatement and others as listed and specified in drawings.				
	Note:- Items for work in this class shall include:- - Excavation, preparation of surfaces, disposal of excavated material, shoring sides of excavation, backfilling and removal of redundant services. - Concrete, reinforcement, formwork, joints and finishes. - Tips for disposal of excavated material or debris to be identified by the Contractor in liaison with the Local Authority. - Approved padlocks for all chamber covers				
	In Situ Chambers				
	Provide all materials and construct CONTROL VALVE and WATER METER chambers internal dimensions 1000mm x 1000mm. Include for supply and fixing of 600mm x 600mm lockable cover and step irons, as detailed in drawing				
K211.1	Depth: not exceeding 2 m	nr	2		
	Provide all materials and construct WASHOUT chambers internal dimensions 1000mm x 1000mm. Include for supply and fixing of 600mm x 600mm lockable concrete cover and step irons, as detailed in drawing				
K211.2	Depth: not exceeding 2 m	nr	1		

	Provide all materials and construct AIR VALVE chambers internal dimensions 1000mm x 1000mm. Include for supply and fixing of 600mm x 600mm lockable concrete cover and step irons, as detailed in drawing				
K211.3	Depth: not exceeding 2 m	nr	1		
	<u>Road Crossings</u>				
	Extra-overs for normal pipe laying for road crossing works: to include breaking up and permanent reinstatement of roads and provision and laying of GI sleeves (ne 200mm) for road crossings as directed by the Engineer				
K731	Pipe bore: n.e. 300 mm on gravel road	m			
	<u>Marker Posts</u>				
	-				
	<u>Provide RC standard marker posts for:</u>				
K82.1	Air Valves inscribe AV	nr	1		
K82.2	Washouts, inscribe WO	nr	1		
K82.3	Sluice Valves, inscribe SV	nr	2		
K82.4	Pipeline , inscribed "MAJI" and Diameter of the Pipeline at intervals of 200m and at every bend	nr	4		
	-				
					-
	-				
Bill No. 2: Rising Main to 10m3 PVC Main Tank					
ITEM No.	ITEM DESCRIPTION	UNIT	Qty	Unit Rate	Total Amount (KES)
	<u>CLASS L:- PIPEWORK - SUPPORTS AND PROTECTION, ANCILLARIES TO LAYING AND EXCAVATION</u>				
	-				
	Concrete Support, Thrust Blocks and Anchor Blocks				

	Anchor/Trust blocks (as per Standard drawings) Volume n.e. 0.1 m ³				
L711.1	Bends	nr	4		
L711.2	Tees	nr			
	-				
L711.3	Valves	nr	4		
	Other isolated pipe supports				
L821	River & Valley/Laga Crossings. Support to pipe on river and valley crossing height 1 - 1.5m as per the drawings. Rate to include preparation of ground, excavations, grouting, RC Piers, rawling bolts, base plate, welded saddles and rubber bearing as per the drawings or as directed by the Engineer.	nr			
	PAGE TOTAL CARRIED TO SECTION COLLECTION PAGE				

Bill No. 2: Rising Main to 10m3 PVC Main Tank					
ITEM No.	ITEM DESCRIPTION	UNIT	Qty	Unit Rate	Total Amount (KES)
	COLLECTION				
1	From page 1				-
2	From page 2				-
3	From page 3				-
4	From page 4				-

	PIPELINE BILL TOTAL CARRIED TO GRAND SUMMARY				-

-	Bill No 3 : 10m3 PVC Tank & Water Points				-
-					
Civil Works					
-					
-					
-	-	-	-	-	-
ITEM No.	ITEM DESCRIPTION	UNIT	Qty	Unit Rate	Total Amount (KES)
1	SITE CLEARANCE AND SETTING OUT				
A1	Clear site of all bushes, shrubs, etc and dispose as directed by the Engineer	m²	16.0		
	EXCAVATION AND BACKFILLING				
B1	Excavate to reduce levels not exceeding 1.50m deep average depth 300mm	m³	3.6		
	Excavate for foundation strip commencing at reduced levels depth not exceeding 1.50m deep				
	Extra-over for excavation in rock	m³	-		
	Remove surplus excavated material from site	m³	0.7		
	Backfill around foundation	m³			
	HARDCORE & MASONRY WORK				
C1	Well watered hard core packing in layers 150mm thick to make up levels average 250mm deep.	m³	3.0		
C2	50mm blinding to hardcore bed surfaces in quarry dust/murram or equal and approved.	m³	0.6		
C3	Supply and install 150mmx225mmx400mm natural cut Stone for walling for Masonry Work in 1:4 C/M cement sand mortar both sides left for plastering	m³	2.7		
D1	Apply Termidor or any other similar and approved anti-termite chemical treatment on hardcore	m²	3.0		
	DPM AND DPC				
E1	1000gauge polythene in dpm on blinded surfaces.	m²	3.0		
	SAWN FORMWORK				
F1	To vertical edges of floor slab 75 - 150 mm high.	m	8.0		
	-				
	REINFORCEMENT				
G1	B.R.C mesh REF no 65 to concrete base/floor slab and drainage grooves	m²	3.0		
	CONCRETE WORKS IN SUBSTRUCTURE				

	Rates to include providing and placing the following concrete mixes including all form-work.				
	Concrete Mix 1:2:4				
H1	Ditto in 300mm concrete base	m ³	0.2	-	-
H2	Ditto in 150mm thick drainage grooves	m ³	0.1		
H3	Ditto in 75mm concrete apron.	m ³	0.2		
	-				
	FINISHES				
I1	25mm thick sand cement lime plaster to external surfaces. To receive paint	m ²	9.5		
I2	Provide 3 coats of Crown Permacote Ultra Guard with Silicone paint to all exposed concreted faces with World Vision colour shades or as directed by the Engineer on site.	m ²	9.5		
I3	BRANDING Provide a section at side of standing tap and brand on dry surface the visible logo of SIDA, World Vision & IMARA and the wording.... as directed by the Engineer on site.	Item	1.0		
	<u>PIPE WORK AND FITTINGS</u>				
	<u>Rates include supplying of pipe fittings including all jointing 'accessories,' handling, fixing, jointing and testing to the fetching bay. Rates also to include cutting and joining pipes.</u>				
J1	110mm dia. waste pipe to be laid between the gulley trap of the fetching area and the soak pit, 6m length.	No.	3.0		
J2	Gate valve Ø 25 mm peggler	No.	3.0		
J3	GI Union Ø 25 mm	No.	3.0		
J4	GI Nipple Ø 25 mm	No.	3.0		
J5	GI Pipe Ø 25 mm of 6m long	No.	2.0		
J6	GI Elbow Ø 25 mm	No.	3.0		
J7	GI Socket Ø 25 mm	No.	12.0		
J8	GI Cross Ø 25 mm	No.	3.0		
J9	GI Tee Ø 25 mm	No.	3.0		
J10	Stainless steel Tap Ø 25 mm	No.	12.0		
J11	GI reducing bush 1.5x3/4"	No	3.0		
	-				
	<u>CHAMBERS & OTHER CIVIL WORKS</u>				
K1	Gate valve chamber size 600 x 600 x 600mm high with 100mm thick sides and rebated top edge for and including including 600 x 600 x 4mm steel cover c/w locks. Cover to be painted with 3 coats of blue colour.	No.	3.0		

K2	Provide materials and construct 10m ³ plastic tank concrete slab (3m dia., 1m abgl), as per the drawing.	No.	1.0		
K3	Supply and install 10m ³ branded (IMARA & ILEPA logos) plastic water tanks (Roto/Kentank). Cost to include all plumbing materials for connection to water pipeline and water points/cattle troughs.	No.	1.0		
K4	Provide for tank roofing for shading - 4No. 50mm steel poles with holding brackets for rafters @ 3.2m c/c; 4 x 2' sawn timber for rafter; 3x2' purlins; 6x1 fascia boards. 16m ² versatile profile CIS 30G nailed to 3x2' purlins. All timber work and stanchion to be painted with two coats blue color.	No.	1.0		
	Provide for tank Side wall Cladding versatile profile CIS 30G - 4No. 50mm steel angle line runners with holding brackets for rafters versatile profile CIS 30G nailed to 3x2' purlins. All timber work and stanchion to be painted with two coats blue color.	m2	32.0		
K5	Soak away pit located 6meters from the structure. The drainage channel to be linked with soak away pit with a 110mm PVC drainage waste pipe (6m length). The Soak away pit to have 1m Diameter and 1.5metres deep, filled with Hardcore with soil 30 cm thick on a polythene cover material.	No.	1.0		
K6	Provide for 4x4m fencing using 50x50mm angle line posts, 12.5 Gauge plain wire (4 strands), chain link G12.5 and lockable 1.5m wide gate (25x25mm SHS on 50x50mm SHS frame) fixed to 2" pole column to Engineer's approval.	No.	1.0		

Civil Works					
Bill No. 4: Main Distribution Line					
-	-	-	-	-	-
ITEM No.	ITEM DESCRIPTION	UNIT	Qty	Unit Rate	Total Amount (KES)
	<u>CLASS A: GENERAL ITEM</u>				
	-				
A25	<u>Testing of works</u>				
A25.1	Pressure testing and commissioning for the pipeline, including all necessary equipment, materials and labour for the works e.g. delivery of water for testing, fittings, disposal of used water. Pressure gauge to be calibrated by an accredited body	m	175		
A25.2	Disinfection of Pipe lines: flushing with clear water, filling with water containing 0.05 g/l calcium hypochlorite for 24 hours. This includes supply of all necessary equipment, materials, chemicals and water, measurement of residual chlorine, all as specified.	m	175		
	CLASS D: DEMOLITION AND SITE CLEARANCE				
D1	General clearance (1.5m wide corridor)	m	175		
	<u>Stumps (Provisional)</u>				
	-				
	Cut down trees, grub up roots and cart away to tips, Girth shall be measured 1.0 m above the ground level				
D32	Girth: 0.5m - 1.0m	Nr			
	CLASS I: PIPE WORK - PIPES				
	<u>Provide and Lay</u>				
	-				

	Provide (incl purchase, storage and transportation), lay and joint pipes in trench, include for excavation in normal material, preparation of surfaces, disposal of excavated material, dewatering, shoring sides of excavation and backfilling with suitable selected excavated material				
	<p>Note:- Trench width and minimum cover to pipes is as per the Specification (width 600mm and min cover 800mm). The cost shall include for strutting, shuttering, stabilizing the earth faces of trenches and keeping the trenches free of water from whatever source by pumping or other means and cost of use of selected soil from the excavated material for compaction in bed and surround to backfilling of trenches, all as specified.</p> <p><u>The rate shall also include excavation in pipeline trench for rock and hard material</u></p>				
	-				
	<u>Provide and Lay 'Galvanised Iron-GI CLASS B (Compression Fitted)</u>				
	-				
I712	OD 63mm in trench, depth not exceeding 1.5 m	m	175		
I713	OD 63mm in trench, depth 1.5 - 2 m	m			
	-				
	-				
	-				
PAGE TOTAL CARRIED TO SECTION COLLECTION SHEET					-
	-				
	<u>Valves</u>				
	-				
	Supply, handle, deliver to site, fix in place and test inclusive of all fittings as in the Standard drawings . Valves to BS 5163 and EN 1074 Standards				
	<u>Air-Valves</u>				
	<i>Anti shock anti surge Air Valve with isolating valve</i>				
J861	DN 50 Single orifice on OD63 mm pipeline	nr	1		

	<u>Washout valves</u>				
	-				
J811.1	Washout Valve (50mm opening) on OD63mm pipe	nr	1		
	<u>Sluice/Gate Valves</u>				
J811.2	DN50 mm Gate Valve	nr	1		
	<u>Galvanised iron pipes Pieces</u>				
	Supply, handle, deliver to site, fix in place and test inclusive of all steel pipes PN16 to be used in valve and meter chambers				
J381	DN50mm - Single Flanged Plain Ended, 1m long	nr	16		

PAGE TOTAL CARRIED TO SECTION COLLECTION PAGE

-

	-				

Bill No. 4: Main Distribution Line

ITEM No.	ITEM DESCRIPTION	UNIT	Qty	Unit Rate	Total Amount (KES)
	<u>ANCILLARY WORKS</u>				
	-				
	Chambers, ducts, culverts, crossings, thrust and anchor blocks, reinstatement and others as listed and specified in drawings.				
	Note:- Items for work in this class shall include:- - Excavation, preparation of surfaces, disposal of excavated material, shoring sides of excavation, backfilling and removal of redundant services. - Concrete, reinforcement, formwork, joints and finishes. - Tips for disposal of excavated material or debris to be identified by the Contractor in liaison with the Local Authority. - Approved padlocks for all chamber covers				

	<u>In Situ Chambers</u>				
	Provide all materials and construct WASHOUT chambers internal dimensions 1000mm x 1000mm. Include for supply and fixing of 600mm x 600mm lockable concrete cover and step irons, as detailed in drawing				
K211.2	Depth: not exceeding 2 m	nr	1		
	Provide all materials and construct AIR VALVE chambers internal dimensions 1000mm x 1000mm. Include for supply and fixing of 600mm x 600mm lockable concrete cover and step irons, as detailed in drawing				
K211.3	Depth: not exceeding 2 m	nr	1		
	<u>Road Crossings</u>				
	<i>Extra-overs for normal pipe laying for road crossing works: to include breaking up and permanent reinstatement of roads and provision and laying of GI sleeves (ne 200mm) for road crossings as directed by the Engineer</i>				
K731	Pipe bore: n.e. 200 mm on gravel road	m	12		
	<u>Marker Posts</u>				
	-				
	<u>Provide RC standard marker posts for:</u>				
K82.1	Air Valves inscribe AV	nr	1		
K82.2	Washouts, inscribe WO	nr	1		
K82.4	Pipeline , inscribed "MAJI" and Diameter of the Pipeline at intervals of 200m and at every bend	nr			
	-				
PAGE TOTAL CARRIED TO SECTION COLLECTION PAGE					-
	-				
Bill No. 4: Main Distribution Line					

ITEM No.	ITEM DESCRIPTION	UNIT	Qty	Unit Rate	Total Amount (KES)
	<u>CLASS L:- PIPEWORK - SUPPORTS AND PROTECTION, ANCILLARIES TO LAYING AND EXCAVATION</u>				
	-				
	Concrete Support, Thrust Blocks and Anchor Blocks				
	<i>Anchor/Trust blocks (as per Standard drawings) Volume n.e. 0.1 m³</i>				
L711.1	Bends	nr	5		
L711.2	Tees	nr	5		
	-				
L711.3	Valves	nr	6		
	Other isolated pipe supports				
L821	River & Valley/Laga Crossings. Support to pipe on river and valley crossing as per the drawings or as directed by the Enguneer. Rate to include preparation of ground, excavations, grouting, haunching, RC Piers, rawling bolts, base plate, welded saddles and rubber bearing as per the drawings or as directed by the Engineer. <i>Crossing at CH 0+330 to inlcude provision and laying of GI sleeves (ne 200mm) for the crossings as directed by the Engineer</i>	nr			

Bill No. 4: Main Distribution Line

ITEM No.	ITEM DESCRIPTION	UNIT	Qty	Unit Rate	Total Amount (KES)
	COLLECTION				
1	From page 1				
2	From page 2				
3	From page 3				
4	From page 4				

	PIPELINE BILL TOTAL CARRIED TO GRAND SUMMARY				
--	--	--	--	--	--

	Branch Line				
Civil Works					
Bill No. 5: Branch Line 1 from the Main Line					
-	-	-	-	-	-
ITEM No.	ITEM DESCRIPTION	UNIT	Qty	Unit Rate	Total Amount (KES)
	<u>CLASS A: GENERAL ITEM</u>				
	-				
A25	<i>Testing of works</i>				
A25.1	Pressure testing and commissioning for the pipeline, including all necessary equipment, materials and labour for the works e.g. delivery of water for testing, fittings, disposal of used water. Pressure gauge to be calibrated by an accredited body	m	70		
A25.2	Disinfection of Pipe lines: flushing with clear water, filling with water containing 0.05 g/l calcium hypochlorite for 24 hours. This includes supply of all necessary equipment, materials, chemicals and water, measurement of residual chlorine, all as specified.	m	70		
	CLASS D: DEMOLITION AND SITE CLEARANCE				
D1	General clearance (1.5m wide corridor)	m	70		
	<i>Stumps (Provisional)</i>				
	-				
	Cut down trees, grub up roots and cart away to tips, Girth shall be measured 1.0 m above the ground level				
D32	Girth: 0.5m - 1.0m	Nr	2		
	CLASS I: PIPE WORK - PIPES				
	<i>Provide and Lay</i>				
	-				

	Provide (incl purchase, storage and transportation), lay and joint pipes in trench, include for excavation in normal material, preparation of surfaces, disposal of excavated material, dewatering, shoring sides of excavation and backfilling with suitable selected excavated material				
	Note:- Trench width and minimum cover to pipes is as per the Specification (width 600mm and min cover 800mm). The cost shall include for strutting, shuttering, stabilizing the earth faces of trenches and keeping the trenches free of water from whatever source by pumping or other means and cost of use of selected soil from the excavated material for compaction in bed and surround to backfilling of trenches, all as specified. <u>The rate shall also include excavation in pipeline trench for rock and hard material</u>				
	-				
	<i>Provide and Lay 'Galvanized Iron (GI) Pipes Class B</i>				
	-				
I712	OD 63mm in trench, depth not exceeding 1.5 m	m	70		
I713	OD 63mm in trench, depth 1.5 - 2 m	m			
	-				
	-				
	-				
PAGE TOTAL CARRIED TO SECTION COLLECTION SHEET					-
	-				
Bill No. 5: Branch Line 1 from the Main Line					
ITEM No.	ITEM DESCRIPTION	UNIT	Qty	Unit Rate	Total Amount (KES)
	<u>CLASS J: PIPE WORK - FITTINGS AND VALVES</u>				
	<u>Provide, Lay and Joint</u>				
	<u>CLASS J: PIPE WORK - FITTINGS AND VALVES</u>				
	-				
	<i>OD 63mm HDPE PN10 Elbows (Compression Fitted)</i>				

J611.1	45°	Nr	3		
J611.2	90°	Nr	2		
	-				
	<u>Tees</u>				
	<i>PN 10 Compression Fitted</i>				
J621	OD 63mm x OD 63mm	Nr	8		
	<u>Valves</u>				
	-				
	Supply, handle, deliver to site, fix in place and test inclusive of all fittings as in the Standard drawings . Valves to BS 5163 and EN 1074 Standards				
	<i>Air-Valves</i>				
	<i>Anti shock anti surge Air Valve with isolating valve</i>				
J861	DN 50 Single orifice on OD63 mm pipeline	nr			
	<i>Washout valves</i>				
	-				
J811.1	Washout Valve (50mm opening) on OD63mm pipe	nr			
	<i>Gate valves</i>				
J811.2	DN50 mm Gate Valve	nr	4		
	<u>Flexible couplings</u>				
	-				
J641.1	DN50 mm	nr			
	-				
	<u>Flange adapters</u>				
J651	DN50 mm	nr			
	<u>Galvanised iron pipes Pieces</u>				
	Supply, handle, deliver to site, fix in place and test inclusive of all steel pipes PN16 to be used in valve and meter chambers				

J381	DN50mm - Single Flanged Plain Ended, 1m long	nr	18		
	-				
PAGE TOTAL CARRIED TO SECTION COLLECTION PAGE					-
	-				
Bill No. 5: Branch Line 1 from the Main Line					
ITEM No.	ITEM DESCRIPTION	UNIT	Qty	Unit Rate	Total Amount (KES)
	<u>ANCILLARY WORKS</u>				
	-				
	Chambers, ducts, culverts, crossings, thrust and anchor blocks, reinstatement and others as listed and specified in drawings.				
	Note:- Items for work in this class shall include:- - Excavation, preparation of surfaces, disposal of excavated material, shoring sides of excavation, backfilling and removal of redundant services. - Concrete, reinforcement, formwork, joints and finishes. - Tips for disposal of excavated material or debris to be identified by the Contractor in liaison with the Local Authority. - Approved padlocks for all chamber covers				
	<u>In Situ Chambers</u>				
	Provide all materials and construct WASHOUT chambers internal dimensions 1000mm x 1000mm. Include for supply and fixing of 600mm x 600mm lockable concrete cover and step irons, as detailed in drawing				
K211.2	Depth: not exceeding 2 m	nr			-
	Provide all materials and construct AIR VALVE chambers internal dimensions 1000mm x 1000mm. Include for supply and fixing of 600mm x 600mm lockable concrete cover and step irons, as detailed in drawing				
K211.3	Depth: not exceeding 2 m	nr			-

	<u>Marker Posts</u>				
	-				
	<i>Provide RC standard marker posts for:</i>				
K82.1	Air Valves inscribe AV	nr			-
K82.2	Washouts, inscribe WO	nr			-
K82.4	Pipeline , inscribed "MAJI" and Diameter of the Pipeline at intervals of 200m and at every bend	nr			-
	-				
PAGE TOTAL CARRIED TO SECTION COLLECTION PAGE					-
	-				
Bill No. 5: Branch Line 1 from the Main Line					
ITEM No.	ITEM DESCRIPTION	UNIT	Qty	Unit Rate	Total Amount (KES)
	<u>CLASS L:- PIPEWORK - SUPPORTS AND PROTECTION, ANCILLARIES TO LAYING AND EXCAVATION</u>				
	-				
	Concrete Support, Thrust Blocks and Anchor Blocks				
	<i>Anchor/Trust blocks (as per Standard drawings) Volume n.e. 0.1 m³</i>				
L711.1	Bends	nr			-
L711.2	Tees	nr			-
	-				
L711.3	Valves	nr			-
PAGE TOTAL CARRIED TO SECTION COLLECTION PAGE					-

Bill No. 5: Branch Line 1 from the Main Line					
ITEM No.	ITEM DESCRIPTION	UNIT	Qty	Unit Rate	Total Amount (KES)
	COLLECTION				
1	From page 1				-
2	From page 2				-
3	From page 3				-
4	From page 4				-
	PIPELINE BILL TOTAL CARRIED TO GRAND SUMMARY				

Civil Works - Immediate Intervention Works					
Bill No. 5: 5 No. Community Tap Stands/Water Points					
-	-	-	-	-	-
ITEM No.	ITEM DESCRIPTION	UNIT	Qty	Unit Rate	Total Amount (KES)
	SITE CLEARANCE AND SETTING OUT				
A1	Clear site of all bushes, shrubs, etc and dispose as directed by the Engineer	m ²	2.0		
	EXCAVATION AND BACKFILLING				
B1	<u>Excavate to reduce levels not exceeding 1.50m deep average depth 300mm</u>	m ³	2.0		
	<u>Excavate for foundation strip commencing at reduced levels depth not exceeding 1.50m deep</u>				
	Extra-over for excavation in rock				
	Remove surplus excavated material from site				
	Backfill around foundation				
	HARDCORE				
C1	Well watered hard core packing in layers 150mm thick to make up levels average 200mm deep.	m ³	0.4		
C2	50mm blinding to hardcore bed surfaces in quarry dust/murram or equal and approved.	m ²	2.0		
D1	Apply Termidor or any other similar and approved anti-termite chemical treatment on hardcore	m ²	2.0		
	DPM AND DPC				
E1	1000gauge polythene in dpm on blinded surfaces.	m ²	2.0		
	SAWN FORMWORK				
F1	<i>To vertical edges of floor slab 75 - 150 mm high.</i>	m	4.4		
	REINFORCEMENT				
G1	B.R.C mesh REF no 65 to concrete base/floor slab and drainage grooves	m ²	2.0		
	CONCRETE WORKS IN SUBSTRUCTURE				
	Rates to include providing and placing the following concrete mixes including all form-work.				
	Concrete Mix 1:2:4				
H1	Ditto in 300mm concrete base	m ³	0.2		

H2	<u>Ditto in 150mm thick drainage grooves</u>	m ³	0.1		
H3	<u>Ditto in 75mm concrete apron.</u>	m ³	0.1		
	-				
	FINISHES				
I1	25mm thick sand cement lime plaster to external surfaces. To receive paint	m ²	0.5		
I2	<u>Provide 3 coats of Crown Permacote Ultra Guard with Silicone paint to all exposed concreted faces with World Vision colour shades as directed by the Engineer on site.</u>	m ²	0.5		
I3	BRANDING Provide a section at side of standing tap and brand on dry surface the visible logo of World Vision then the wording... "Supported by World Vision Kenya Big Dream FY 24" Or as directed by the Engineer on site.	No.	1.0		
	<u>PIPE WORK AND FITTINGS</u>				
	<u>Rates include supplying of pipe fittings including all jointing 'accessories,' handling, fixing, jointing and testing to the fetching bay. Rates also to include cutting and joining pipes.</u>				
J1	110mm dia. waste pipe to be laid between the gulley trap of the fetching area and the soak pit.	m	6.0		
J2	25mm dia. PPR pipe straights (Heavy duty) to be connected to water supply with appropriate reducers	m	12.0		
J3	PPR Pipe Fittings (Rates to include all connections)				
J4	25mm diameter Gate valve	No.	1.0		
J5	25mm diameter Heavy duty water taps	No.	1.0		
J6	25mm diameter Union	No.	1.0		
J7	25mm diameter nipple	No.	2.0		
J8	25mm dia.1m long stand pipe	No.	1.0		
J9	25mm diameter 90° bend/elbow	No.	2.0		
J10	25mm diameter Coupler/Socket	No.	2.0		
J11	25mm diameter water meter	No.	1.0		
	-				
	<u>CHAMBERS</u>				
K1	Masonry gulley trap chamber size 600 x 600 x 600mm high with 100mm thick sides and rebated top edge for and including including 600 x 600 x 50mm thick precast concrete cover including bedding UPVC gulley, dishing base of gulley, all necessary formwork, excavation and disposal. As per the drawings.	LS	1.0		

L1	Masonry soak away pit size 1200 x1200 x 1200mm deep with concrete cover as per the drawing. Rates to include 200mm thick granular filled layer, excavation, all necessary formwork and disposal of surplus materials.	No.	1.0		
TOTAL FOR 1No Tap Stand					
<u>TOTAL FOR 5No Tap Stand Carried to Summary</u>		No.	3.0		

“Indigenous Livelihoods Enhancement Partners (ILEPA) reserves the right to accept or reject any bid and is not bound to give reasons for its decision”.

